

Labtex

AATCC M6D DRYING MACHINE MODEL: LBT-M6D



Read operator's manual



Caution



OPERATION INSTRUCTION

[Version 2.0]

INDEX

I.	IMPORTANT SAFETY INSTRUCTIONS	2
II.	INTRODUCTION	5
III.	PARTS DESCRIPTION	6
	A. Fabric Selector	
	B. Display Screen	
	C. Start or Stop / Time Setting Control Knob	
IV.	OPERATION	8
V.	MAINTENANCE	9
VI.	NOTE	11

I. IMPORTANT SAFETY INSTRUCTIONS

BEFORE USING THIS INSTRUMENT, READ ALL INSTRUCTIONS AND CAUTIONARY MARKINGS IN THIS MANUAL

When using an electrical appliance, basic precautions should always be followed, including the following:

WARNING

For your safety and to reduce the fire or an explosion, do not store or use gasoline or other flammable vapors and liquids in the vicinity of this or any appliance.

TO REDUCE THE RISK OF FIRE, ELECTRIC SHOCK, OR INJURY:

1. This appliance is not intended for use by persons (including children) with reduced physical, sensory or mental capabilities, or lack of experience and knowledge, unless they have been given supervision or instruction concerning use of the appliance by a person responsible for their safety.
2. Children should be supervised to ensure that they do not play with the appliance.
3. Use only as described in this Instruction Manual. Do not carry out any maintenance other than that shown in this manual.
4. Do not handle any part of the plug or machine with wet hands.
5. Do not use with a damaged cord or plug. If the supply cord is damaged it must be replaced by a qualified persons in order to avoid a hazard.
6. Keep this instruction manual by the specialist in a safe place.
7. If the machine is not working as it should, has received a sharp blow, has been dropped, damaged, left outdoors, or dropped into water, do not use and contact your supplier / distributor.
8. Contact the supplier / distributor when service or repair is required. Do not disassemble the machine as incorrect reassembly may result in an electric

OPERATION INSTRUCTION

shock or fire.

9. Do not stretch the cord or place the cord under strain. Keep the cord away from heated surfaces. Do not close a door on the cord, or pull the cord around sharp edges or corners. Arrange the cord away from traffic areas and where it will not be stepped on or tripped over. Do not run over the cord.
10. Do not incinerate this machine even if it is severely damaged.
11. CAUTION: In order to avoid a hazard due to inadvertent resetting of the thermal cut-out, this appliance must not be supplied through an external switching device, such as a timer, or connected to a circuit that is regularly switched on and off by the utility.
12. This appliance can be used by children aged from 8 years and above and persons with reduced physical, sensory or mental capabilities or lack of experience and knowledge if they have been given supervision or instruction concerning use of the appliance in a safe way and understand the hazards involved.
13. Children shall not play with the appliance.
14. Cleaning and user maintenance shall not be made by children without supervision.
15. Warning: that the appliance shall be disconnected from its power source during service and when replacing parts/If this is not possible, due to the construction of the appliance or its installation, a disconnection with a locking system in the isolated position shall be provided.
16. The instructions shall give information about particular chemical substances which shall not be used.
17. That exhaust air shall not be discharged into a flue which is used for exhausting fumes from appliances burning gas or other fuels. This instruction is not required if the appliance discharges the air into the room.
18. that the appliance shall not be installed behind a lockable door, a sliding door or a door with a hinge on the opposite side to that of the appliance, in such a way that a full opening of the appliance door is restricted.

Labtex **AATCC-M6 Drying Machine**

LBT-M6D

OPERATION INSTRUCTION

19. Shall be given that only authorised spare parts have to be used in the event of failure.

WARNING

Do not wash or dry items soiled with vegetable or cooking oils. Some oils may remain after washing and may cause the fabric to catch on fire by itself.

4

READ AND SAVE THESE INSTRUCTIONS

HINTS:

- Make sure the lint filter is always clean.
- Do not overload the dryer.
- Dry multiple loads of clothes one right after another so dryer interior does not have to be reheated for each load.
- The directions for installation and proper exhausting are given in the installation instructions which are included with the dryer.
- Do not wash or dry clothes that shed lint in the same load with permanent press or knit garments.
- Do not overload your dryer. Bulk, not weight, determines the load size. If the dryer is overloaded, it could cause discoloration or permanent heat damage to the load.
- There should be space in the dryer for the clothes to tumble freely and help to reduce wrinkles.
- That lint shall not to be allowed to accumulate around the appliance (not applicable for appliances intended to be vented to the exterior of the building);
- That adequate ventilation has to be provided to avoid the back flow of gases into the room from appliances burning other fuels, including open fires.
- Maximum mass of dry textile material in kilograms to be used in the appliance:
8kg
- Do not dry unwashed items in the appliance.
- Items that have been soiled with substances such as cooking oil, acetone, alcohol, petrol, kerosene, spot removers, turpentine, waxes and wax removers should be washed in hot water with an extra amount of detergent before being dried in the appliance;
- Items such as foam rubber (latex foam), shower caps, waterproof textiles, rubber backed articles and clothes or pillows fitted with foam rubber pads should not be dried in the appliance

OPERATION INSTRUCTION

- Fabric softeners, or similar products, should be used as specified by the fabric softener instructions.
- The final part of the drying cycle occurs without heat (cool down cycle) to ensure that the items are left at a temperature that ensures that the items will not be damaged.
- Remove all objects from pockets such as lighters and matches.
- **WARNING:** Never stop the appliance before the end of the drying cycle unless all items are quickly removed and spread out so that the heat is dissipated.
- For appliances with ventilation openings in the base, that a carpet or similar shall not obstruct the openings.

II. INTRODUCTION

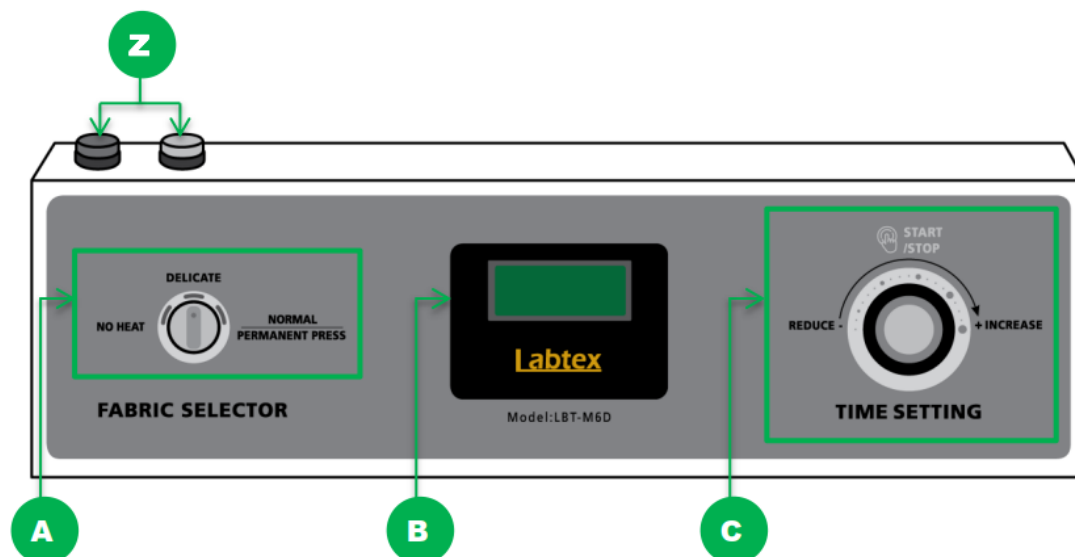
The Labtex Drying Machine LBT-M6D are designed to meet the parameters which listed on AATCC LP1-2018 Table VI.

METHOD	DESCRIPTION
AATCC 88B	Seam Smoothness in Fabrics after Home Laundering
AATCC 88C	Crease Retention in Fabrics after Home Laundering
AATCC 124	Smoothness Appearance of Fabrics after Home Laundering
AATCC 135	Dimensional Changes of Fabrics after Home Laundering
AATCC 143	Appearance of Apparel and Other Textile End Products After Home Laundering
AATCC 150	Dimensional Changes of Garments after Home Laundering

This manual is used to help the operator to use the drying machine properly and correctly.

III. PARTS DESCRIPTION

Personalized Interactive Console



ITEM	DESCRIPTION		
Z	Drying Machine Status Indication Lamps When Red Lamp Lit: Machine stopped or Pause When Green Lamp Lit: Machine operating		
A	FABRIC SELECTOR		
	No Heat	Delicate	Normal / Permanent Press
B	Display Screen		
C	Start or Stop / Time Setting Control Knob		

A. Fabric Selector (Mode selection)

The standard program selection knob

There are three drying procedures which shown from Right to Left:

- Normal / Permanent Press
- Delicate
- NO Heat



B. Display Screen

The display interface of the drying program

- The right side of the screen shows the duration in mins, the left side shows the procedures.

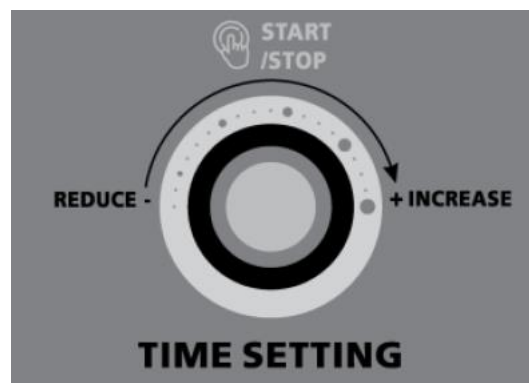


C. Start or Stop /

Time Setting Control Knob

This knob is used for time setting and start or stop the machine.

- Drying time can be selected according to the demand. Time decreases to the right. Generally, the initial default is 70 minutes drying time.
- Choose the appropriate time according to the demand before drying load mass.



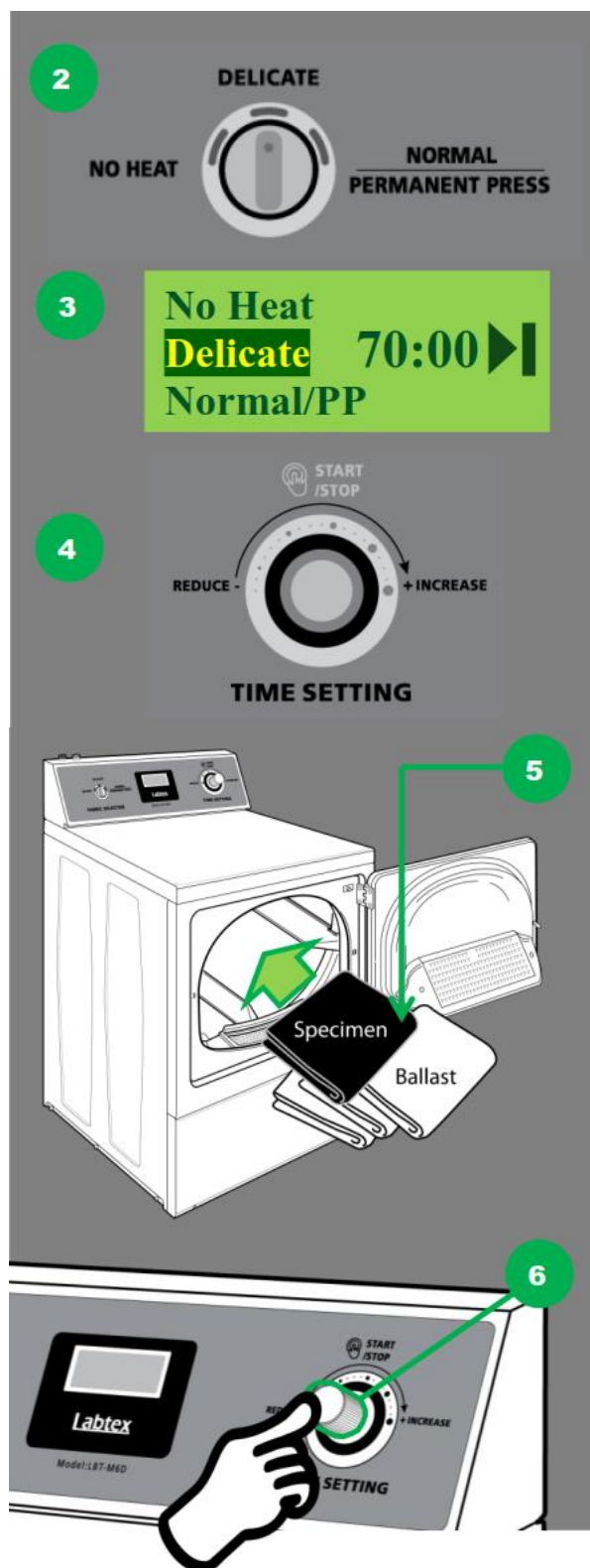
IV. OPERATION

Follow below example:

1. Make sure the machine power is on.
2. Select the drying temperature mode by turn the knob of "FABRIC SELECTOR":

Program	Temp.
No Heat	No
Delicate	Low
Normal / PP	High

3. The middle display screen will shows the selected mode in dark color background.
4. Rotate the "TIME SETTING" control knob to select the time duration in minutes.
5. Put the washed load (test specimen and ballast) into the tumble drying machine.
6. Press the "TIME SETTING" knob to start, the machine runs automatically. Press the knob 1 more time to pause/stop the machine. If press and hold the knob in 3 seconds, the program cancel and return to main screen.
7. The drying time duration presetted to add 10 minutes of cooling down after confirmed for "Normal / PP" and "Delicate" mode, except "NO HEAT".



VII. MAINTENANCE

Care of Your Dryer

WARNING

To reduce the risk of an electric shock, serious injury or death, disconnect the electrical service to the dryer.

WARNING

Any disassembly requiring the use of tools must be performed by a suitable qualified service person.

1. The exhaust duct should be inspected after one year of use and cleaned if necessary by a qualified service person to remove any lint build-up. Inspect and clean exhaust duct every one to two years a required thereafter.
2. Keep dryer area clear and free from combustible materials, gasoline and other flammable vapors and liquids.
3. Do not obstruct the flow of combustion and ventilation air.

Lint Filter

The lint filter is located at the front of the dryer in the lower part of the door opening.

Clean the Lint filter before drying each load. Remove lint filter cover, clean lint filter and replace cover. Annually remove lint filter and screw to vacuum the duct under it.

Motor Overload Protector

The dryer's motor overload protector stops the motor automatically in the event of an overload. After cooling, the overload protector will reset itself.

Before You Call for Service

If the dryer:

Symptom	Possible Reason / Solution
Won't Start	<ul style="list-style-type: none"> ● Make sure the power cord is plugged all the way into the electrical outlet ● Make sure loading door is closed ● Press Start/Stop knob to start dryer ● Make sure the laundry room fuse(s) isn't blown or loose, circuit breakers aren't open ● The dryer itself does not have an electrical fuses ● Check if motor overload protector has cycled. Wait 10 minutes and try again
Won't Heat	<ul style="list-style-type: none"> ● Make sure dryer program is not "No Heat" ● Check exhaust duct to outside to see if it is kinked, blocked or needs cleaning ● Check weather hood to make sure flapper moves freely, has not been pushed in or has not been blocked
Doesn't dry specimen satisfactorily	<ul style="list-style-type: none"> ● Check exhaust duct to outside to see if it is kinked, blocked or needs cleaning ● Check weather hood to make sure flapper moves freely, has not been pushed in or has not been blocked ● Clean the lint filter
Noisy	<ul style="list-style-type: none"> ● Check dryer for foreign objects (nail, coins, bobby pins, metal, etc.). Remove items from dryer. ● Make sure dryer is level. Uneven leveling can cause vibration. ● Normal operating sounds include the heat source going on and off the humming of air moving through the dryer and exhasut system

Manufacturers:	Guangzhou Johnson Measurement and control Technology Co. Ltd.
Address:	Room 2001, No.13 Heshui West, Shatai Road, Tianhe District, Guangzhou
Website:	www.lab-wash.com
Email:	info@lab-wash.com

VIII. NOTE
