

micros

MICROS Austria
Hunnenbrunn - Gewerbezone 5
9300 St. Veit/Glan, AUSTRIA

Tel: +43/4212/30901
Fax: +43/4212/30901 90
office@micros.at

www.micros.at



ROYAL MICROSCOPICAL SOCIETY



EUROPEAN CORPORATE MEMBER
ASSEMBLY (ECMA)

We are here for you



* Microscope designs developed by MICROS Austria. Specifications and equipment are subject to change without any obligation on the part of the manufacturer.

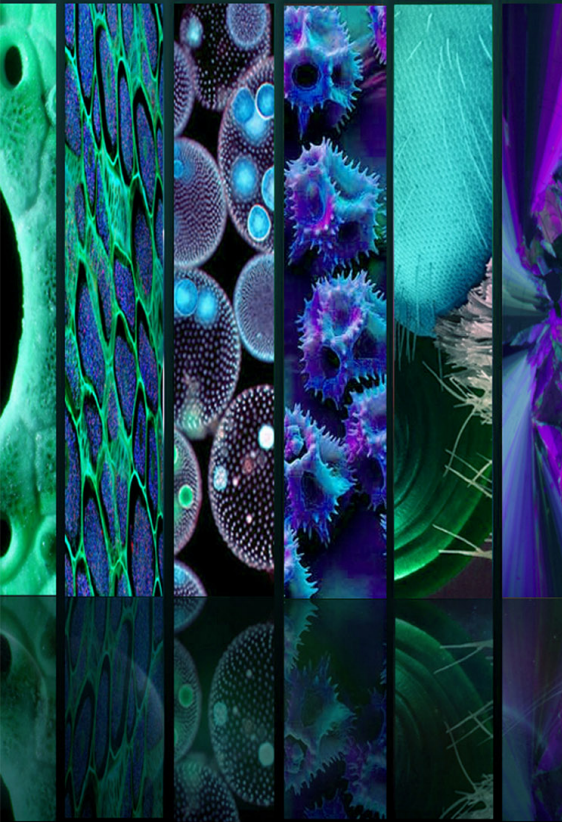
* Actual item may differ from photos.

If you love microscopes



micros

AUSTRIA



MICROS Austria was founded in February 1994 and is producing and trading microscopes and microtomes for various applications in the area of clinical microscopes, life science applications and also the material science sector.

MICROS microscopes are high quality products with an excellent price performance ratio. Our product range has been steadily expanded and our microscopes adjusted to our customers requirements.

We are very proud of our special innovations in microscopy - our unique and patented glass stage or our sliding stage.

Originally MICROS has been founded to sell high-grade microscopes for a reasonable price, especially in Austria. Meanwhile MICROS Austria is dealing successfully with microscopes in all different countries of the world.

daisy/violet



DAISY MC10

Fine microscope for educational use and routine applications

OPTICS

Finite corrected optical system; **Objectives:** Achromatic 4/0.10, 10/0.25, 40/0.65 spring loaded, 100/1.25 oil, spring loaded; **Condenser:** Abbé brightfield condenser n.A. 1.25, **Eyeieces:** WF 10x/18 (Ø 23mm)

MECHANICS

Base: 231 x 168mm; **Focusing:** Coaxial coarse and fine focus control, total focusing range 10mm; **Head:** Binocular ARCTYPE, 30° inclined, 360° rotatable; **Nosepiece:** Quadruple; **Stage:** Double layer mechanical specimen stage, 120 x 125mm; **Illumination:** LED

OPTIONS

Eyeiece 16x, objective Achromatic 60/0.85, eyeiece micrometer, object micrometer, aluminium case

ALSO AVAILABLE

Monocular tube version with triple nosepiece, Objectives 4/10/40
Plain stage with stage clips 110x120mm

VIOLET MC20

Solid microscope for routine applications

OPTICS

Finite corrected optical system; **Objectives:** ACHRO 4/0.10, 10/0.25, 40/0.65 spring loaded; **Condenser:** Abbé brightfield condenser n.A. 1.25, **Eyeieces:** WF 10x/18 (Ø 23mm)

MECHANICS

Base: 270 x 250mm; **Focusing:** Coaxial coarse and fine focus control, total focusing range 20mm; **Head:** Binocular, 30° inclined, 360° rotatable; **Nosepiece:** Quadruple; **Stage:** Double layer mechanical stage, 120 x 125mm; **Illumination:** Halogen 6V20W

Daylight mirror unit for outdoor use

OPTIONS

Objective ACHRO 20/0.40, ACHRO 60/0.85, ACHRO 100/1.25 oil, fixation of eyeieces, aluminium case

pink/pink bat



PINK MC50

Reliable microscope for routine laboratory applications

OPTICS

Finite corrected optical system; **Objectives:** ACHRO 4/0.10, 10/0.25, 40/0.65 spring loaded, 100/1.25 oil, spring loaded; **Condenser:** Abbé brightfield condenser n.A. 1.25; **Eyeieces:** WF 10x/18 (Ø 23mm), suitable to spectacle wearers, no additional eyecups required

MECHANICS

Base: 203 x 145mm; Focusing: Coaxial coarse and fine focus control, total focusing range 20mm; Head: ARCTYPE ergonomic binocular, 30° inclined, 360° rotatable; Nosepiece: Quadruple reversed angle; Stage: Double layer mechanical stage, 140 x 140mm; Illumination: LED

Daylight mirror unit for outdoor use

OPTIONS

Objective ACHRO 20/0.40, ACHRO 60/0.85, eyepiece micrometer, object micrometer, darkfield slider, cord rest, heating stage system*, aluminium case



PINK MC50 BAT

Built-in battery for cordless use

Microscope specifications same as of Pink MC50 including:

ILLUMINATION:

LED lamp powered by Lithium battery or by DC9V power supply. When the battery is fully charged work without the need of a power source nearby is possible. Estimated battery durability is over 8 hours at continuous operation. Recharge time: 5 - 6 hours. The microscope can be used while battery is being recharged.

SOLAR PANEL to convert sunlight into electricity (optional available)

Working in regions with strong power fluctuations or in areas with no electricity at all is no problem for our SOLAR version. The included solar panel is a special feature which makes you independent of electric current or missing power source at all. The solar panel generated free power from the sun and converts sunlight into electricity, which the built-in battery is charged with

lotus ECO/ECO PLUS/ECO SLIDE

{LED}



LOTUS MCX51 ECO/ECO PLUS/ECO SLIDE VERSION

A new standard for routine clinical microscopes

OPTICS

Objectives: "PURE" ICO² Plan infinity optics 4/0.10, 10/0.25, 40/0.65 spring loaded, 100/1.25 oil, spring loaded; **Condenser:** Multisystem Abbé brightfield condenser n.A. 1.25, Eyepieces: WF 10x/18 (Ø 23mm), suitable to spectacle wearers, no additional eyecups required

MECHANICS

Base: 203 x 145mm; **Focusing:** Coaxial coarse and fine focus control, total focusing range 20mm; **Head:** ARCTYPE ergonomic binocular, 30° inclined, 360° rotatable; **Nosepiece:** Quadruple reversed angle; **Stage:** Rackless stage/ rackless glass stage* 150 x 133mm/sliding stage* Ø 160mm; **Illumination:** LED

OPTIONS

Trinocular head, mirror unit, eyepieces 16x/11 10/20, eyepiece micrometer, object micrometer, slider for darkfield and phase contrast, cord rest, documentation systems**, heating stage system*, aluminium case

Featured versions

- | | |
|-----------|---|
| ECO | <ul style="list-style-type: none"> • "PURE" ICO² Plan 4/10/40 • rackless stage |
| ECO PLUS | <ul style="list-style-type: none"> • "PURE" ICO² Plan 4/10/40/100 • rackless glass stage |
| ECO SLIDE | <ul style="list-style-type: none"> • "PURE" ICO² Plan 4/10/40 • sliding stage |



SMART SENSE system Clever energy saving!

The infrared sensing device is located in the base on the front. It senses movement and when there is no movement in front of the microscope for 15 minutes, the SMART SENSE system shuts down

the illumination automatically. Together with the advanced LED lighting system LOTUS works environmentally friendly and energy efficient.

daffodil/crocus 5mp



DAFFODIL MCX100 ECO/PLUS VERSION

Advanced life science microscope for routine laboratory applications

OPTICS

Objectives: ICO² Plan infinity optics 4/0.10, 10/0.25, 40/0.65 spring loaded, 100/1.25 oil, spring loaded; **Condenser:** Abbé brightfield condenser n.A. 1.25; **Eyepieces:** WF 10x/20 (Ø 23mm)

MECHANICS

Base: 300 x 270mm; **Focusing:** Coaxial coarse and calibrated fine focus control, total focusing range 20mm; **Head:** ARCTYPE binocular, 30° inclined, 360° rotatable; **Nosepiece:** Quintuple reversed angle; **Stage:** Rackless stage/rackless glass stage* 150 x 133mm; **Illumination:** Koehler illumination, Halogen 6V20W or LED

OPTIONS

Trinocular head, sliding stage*, heating stage system*, different eyepieces, documentation systems, phase contrast, darkfield attachment, aluminium case, documentation systems**, multi observation unit for 2 people, fluorescence and LED fluorescence attachment

CROCUS 5MP MCX100 ECO/PLUS VERSION

Combining high quality microscope technology and premium picture making

Microscope specifications same as of Daffodil MCX100 including:

MICROS CAM500 "PREMIUM"

USB live-camera designed for use in brightfield microscopy applications but is also sensitive enough for some brighter fluorescent specimens. Included is the Image Analyzing software "MICROVISIBLE" which the camera is controlled and operated with.

- > Resolution 5 MP
- > 7 fps at full resolution (2592 x 1932)
- > Sensor Technology: CMOS
- > USB 2.0 Bulk-Transfer with 32MB Onboard Memory
- > Power: USB

ADAPTER

Video attachment 0.45x, CCTV C-Mount adapter with factor 0.45x

Both models are available with or without glass stage ECO version - rackless stage, PLUS version - rackless glass stage

orchid/lily



ORCHID MCX300 ECO/PLUS VERSION

Life science microscope for sophisticated laboratory use

OPTICS

Objectives: ICO² PLAN infinity optics 4/0.10, 10/0.25, 40/0.65 spring loaded and 100/1.25 oil, spring loaded; **Condenser:** Abbé brightfield condenser n.A. 1.25; **Eyeieces:** WF 10x/20 (Ø 23mm)

MECHANICS

Base: 300 x 295 mm; **Focusing:** Coaxial coarse and calibrated fine focus control, total focusing range 26mm; **Head:** Binocular, 30° inclined, 360° rotatable **Nosepiece:** Quintuple reversed angle; **Stage:** Rackless stage/rackless glass stage* 150 x 133mm; **Illumination:** Koehler illumination, Halogen 6V30W or LED

OPTIONS

Trinocular head, ERGO head, photo/video port, different eyepieces, phase contrast, darkfield attachment, fluorescence, polarization, documentation systems**, multi observation unit for up to 3 people, aluminium case

ECO version - rackless stage, PLUS version - rackless glass stage



LILY MCX500

Laboratory microscope for professional research

OPTIONS

Objectives: ICO² PLAN infinity optics 4/0.10, 10/0.25, 40/0.65 spring loaded and 100/1.25 oil, spring loaded; **Condenser:** Abbé brightfield swing-out condenser, n.A. 0.9/1.25; **Eyeieces:** WF 10x/22 (Ø 30mm)

MECHANICS

Base: 380,5 x 295 mm; **Focusing:** Coaxial coarse and calibrated fine focus control with graduation reading 1 micron per division, total focusing range 24mm; **Head:** Binocular ERGO head, inclination from 5° to 35°; **Nosepiece:** Sextuple reversed angle; **Stage:** Double layer mechanical glass stage*, 243 x 158 mm; **Illumination:** Koehler illumination, Halogen 50W or 100W

OPTIONS

Photo/video port, different objectives and eyepieces, glass flash stage, documentation systems**, phase contrast, darkfield, fluorescence and polarization, multi observation unit for up to 5 people, aluminium case

sundew/FL



SUNDEW MCXI600

Inverted biological microscope for routine examinations

OPTICS

Objectives: LWD ICO² PLAN infinity optics for BF or PC observations, 10x/0.25, WD 10mm, 20x/0.40 WD 5.1mm; **Condenser:** ELWD brightfield condenser n.A. 0.3 WD 72mm; **Eyepieces:** WF 10x/22 (Ø 30mm)

MECHANICS

Base: 360 x 280 mm; **Focusing:** Coaxial coarse and calibrated fine focus control, total focusing range 8mm up and 3mm down from focus position (12mm above the stage); **Head:** Binocular 30° inclined, 360° rotatable; **Nosepiece:** Quintuple; **Stage:** Plain stage with inserted glass plate, 160 x 250mm; **Illumination:** Halogen 6V30W

OPTIONS

ERGO head, photo/video port, different objectives and eyepieces, attachable mechanical stage, auxiliary stage, phase contrast, fluorescence, multi observation unit for up to 3 people, documentation systems**, aluminium case

FLUORESCENCE ATTACHMENT

for Sundew MCXI600

Microscope specifications same as of Sundew MCXI600

FLUORESCENCE ATTACHMENT

Inverted microscope with Fluorescence attachment offering deep of color pictures. Fluorescence attachment for 3 norm filter cubes. Equipped with a HBO 100W burner and focusing/centering screws

LIGHT FILTER SYSTEM

- Excitation filter blue: BP460-490, Green: BP510-550
- Double direction dichroic mirror DM500, DM570
- Cut-off filter BA520, BA590

OPTIONS

UV-light filter system: auxiliary excitation filter EX 450-490, Cut-off filter BA530 + BA590

daffodil FL/FL LED



DAFFODIL MCX100 FL

Good performance at an excellent price performance ratio

Microscope specifications same as of Daffodil MX100

FLUORESCENCE ATTACHMENT ...

... equipped with a HBO 100W burner and focusing/centering screws

LIGHT FILTER SYSTEM

- B (blue light), G (green light) and O (transmitted light)
- Excitation filter (EX) (B) EX490 (G) EX545
- Double direction dichroic mirror DM510, DM580
- Cut-off filter (BA) BA530, BA590

OPTIONS

UV-light filter system: auxiliary excitation filter EX450-490, cut-off filter BA530 + BA590



DAFFODIL MCX100 FL LED

High performance while saving energy

Microscope specifications same as of Daffodil MX100

LED FLUORESCENCE ATTACHMENT ...

... takes advantage of the benefits of LEDs. Compact size, minimal heat output, extremely long lamp life span and low power consumption. While saving energy, the LED fluorescence is offering a high performance and is delivering bright and rich in contrast images. Approximate LED lifetime: 50.000 hours.

LIGHT FILTER SYSTEM BLUE

- Excitation BP 460-490
- Dichroic mirror DM505
- Barrier filter BA515

OPTIONS

Green filter system: excitation BP 510-550, dichroic mirror DM570, barrier filter BA590

orchid FL/lily FL



ORCHID MCX300 FL

Observing sharp and vividly colored fluorescence applications

Microscope specifications same as of Orchid MCX300

FLUORESCENCE ATTACHMENT ...

... equipped with a HBO 100W burner and focusing/centering screws

LIGHT FILTER SYSTEM

- B (blue light), G (green light) and O (transmitted light)
- Excitation filter (EX) (B) EX490 (G) EX455
- Double direction dichroic mirror DM510, DM580
- Cut-off filter (BA) BA530, BA590

OPTIONS

UV-light filter system: auxiliary excitation filter EX450-490,
cut-off filter BA530 + BA590



LILY MCX500 FL

Premium performance for crystal clear and rich in contrast images

Microscope specifications same as of Lily MCX500

FLUORESCENCE ATTACHMENT ...

... for 6 norm filter cubes, equipped with a HBO 100W burner and focusing/centering screws

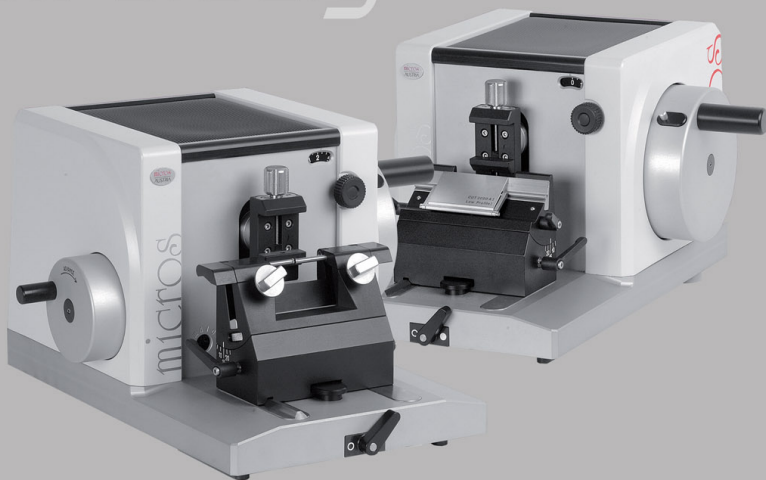
LIGHT FILTER SYSTEM

- B (blue light), G (green light) and O (transmitted light)
- Excitation filter blue: BP460-490, green: BP510-550
- Double direction dichroic mirror DM500, DM570
- Cut-off filter BA520, BA590

OPTIONS

UV excitation filter system: BP330-385, DM400, BA420
Violet excitation filter set: BP400-410, DM455, BA455
Objectives fluorescence ICO² PLAN 4/10/20/40/100

razor/steely



Manual Microtome RAZOR and STEELY

The best choice for research and routine work in biological, medical and industrial field

Made in Germany for MICROS!

The manual Microtome ensures day for day comfortable functionality. Highest precision allows a joyful using with greatest possible safety standard according class 4/MedGV.

Guaranteed reliability through over-extension protection and sliding-clutch anti locking system in the coarse advance. Over the total advance range highest precision of sections from paraffin or plastic blocks.

Specimen changes are very easy to handle through advanced accessory design. Microtome lock conveniently integrated in the hand wheel.

The compact ergonomically design integrates a comfortable storage area for different handling tools.

Technical features:

- Micro and coarse advance movements are enclosed in housing
 - Section thickness adjustment possible from 0.5 μm to 60 μm in defined steps
 - Precise guide way and clamping device for knifeholder with optimum sliding capability and prism guide
 - Vertical stroke: 70 mm
 - Max. horizontal stroke: 40 mm
 - With object orientation unit, adjustable in X/Y axis as option, and object clamp with fixed upper jaw for max. specimen size of 55 x 50 mm
 - Knife holder base for different knife holders
 - Many accessories for different applications available
-
- Length 460 x width 460 mm x height 280
 - Weight 35 kg without accessories

gold/copper



GOLD MCXI700

Inverted metallurgical microscope for the material science world

OPTICS

Objectives: MET ICO² PLAN infinity optics 5x/0.12, WD 15.4mm, 10x/0.25, WD 11.0mm, 20x/0.40, WD 6.0mm, 50x/0.75, WD 0.32mm; **Eyepieces:** WF 10x/22 (Ø 30mm)

MECHANICS

Base: 360 x 280 mm; **Focusing:** Coaxial coarse and calibrated fine focus control, total focusing range 8mm up and 3mm down from focus position (1.2mm above the stage); **Head:** Binocular 30° inclined, 360° rotatable; **Nosepiece:** Quintuple; **Stage:** Plain stage with inserted plate, 160 x 250mm; **Illumination:** Halogen 6V/30W, precentered collector system with field iris and aperture iris; Polarization attachment included

OPTIONS

ERGO head, photo/video port, objective MET ICO PLAN 80x/0.90, WD 0.2mm, MET ICO PLAN 40x/0.60, WD 3.7mm, documentation systems**, attachable mechanical stage, auxiliary stage, aluminium case



COPPER MCXM800

Metallurgical microscope for high samples

OPTICS

Objectives: MET ICO² PLAN infinity optics 5x/0.12, WD 15.4mm, 10x/0.25, WD 11.0mm, 20x/0.40, WD 6.0mm, 50x/0.75, WD 0.32mm; **Eyepieces:** WF 10x/20 (Ø 23mm)

MECHANICS

Base: 300 x 295 mm; **Focusing:** Coaxial coarse and calibrated fine focus control, total focusing range 20mm; **Head:** Binocular 30° inclined, 360° rotatable; **Nosepiece:** Quintuple reversed angle; **Stage:** Double layer mechanical stage, 160 x 140mm; **Maximum sample height:** 36 mm; **Illumination:** Halogen 6V/30W, precentered collector system with field iris and aperture iris; Polarization set: with polarizer and analyzer plate included

OPTIONS

ERGO head, photo/video port, trinocular head, documentation systems**, aluminium case, objective MET ICO² PLAN 80x/0.90, WD 0.2mm, MET ICO² PLAN 40x/0.60, WD 3.7mm

platinum



PLATINUM MCXM500

Widefield Material Science Microscope

PLATINUM features two versions:

- "Incident light" source 24V100W
- "Incident and transmitted light" source 24V100W

OPTICS

Objectives: MET ICO² PLAN infinity optics 5x/0.12, WD 15.4mm, 10x/0.25, WD 11.0mm 20x/0.40, WD 6.0mm, 50x/0.75, WD 0.32mm, 100x/0.90 WD 0.7mm; also included in "incident and transmitted light" version ICO² PLAN infinity optics 40/0.65, 100/1.25 oil; **Eyepieces:** WF 10x/22 (Ø 30mm)

MECHANICS

Base: 380.5 x 295 mm; **Focusing:** Coaxial coarse and calibrated fine focus control, total focusing range 50mm (incident light version), 32mm (incident and transmitted light version) **Head:** Trinocular 30° inclined, 360° rotatable; **Nosepiece:** Quintuple, reversed angle; **Stage:** Double layer mechanical stage, 243 x 158 mm; **Maximum sample height:** 30 mm; **Illumination:** REAL Koehler (for "incident and transmitted light" version), Halogen 24V100W

OPTIONS

ERGO head, different eyepieces, polarization set, documentation systems**

edelweiss



EDELWEISS MCP300

Polarizing Microscope for multiple applications

OPTICS

Finite corrected optical system; **Objectives:** ACHRO 4x/0.10, 10x/0.25, 40x/0.65 spring loaded and 60x/0.80 spring loaded, **Condenser:** Abbé brightfield condenser n.A. 1.25, **Eyepieces:** WF 10x/18 (Ø 23mm), one pc. with cross hair; Polarizer, Analyzer, Bertrand lens, first order compensation red plate, 1/4 wave-length testplate, quartz wedge

MECHANICS

Base: 300 x 295 mm; **Focusing:** Coaxial coarse and calibrated fine focus control, total focusing range 26mm; **Head:** Binocular head, 30° inclined, 360° rotatable **Nosepiece:** Quintuple, reversed angle; **Stage:** Round stage, Ø 145 mm; **Illumination:** Optical light collector system, Halogen 6V20W

OPTIONS

Trinocular head, different eyepieces, documentation systems**, aluminium case

magnolia/diamond



MAGNOLIA MCXP500

Transmitted light illumination



DIAMOND MCXMP500

Incident and transmitted light illumination

OPTICS

Objectives: Strain free ICO² PLAN infinity optics 4x/0.10, 10x/0.25, 40x/0.65, 100x/1.25

Condenser: Strain free swing-out condenser n.A. 0.9/0.25 with aperture iris

Eyeieces: WF 10x/22 (1 pair), WF 10x/22 crosshair with scale, crosshair, grain size (Ø 30mm)

Amici - Bertrandlense focusable with analyzer 360° rotatable, resolution 6, compensation plates: first order red, 530 mμ; ¼ lambda, 147 mμ; quartz wedge, polarizer rotatable 0° position adjustable

MECHANICS

Base: 380,5 x 295 mm; **Focusing:** Coaxial coarse and calibrated fine focus control with graduation reading 1 micron per division, total focusing range 32mm; **Head:** Trinocular head, 30° inclined, 360° rotatable; **Nosepiece:** Quintuple reversed angle with centerable objective thread; **Stage:** Round, Ø 170 mm, centerable; graduated in 1°, resolution 6', 45° check lever

Illumination: Real Koehler Halogen 24V 100W

Specifications same as of Magnolia MCXP500 except:

Incident light illuminator included

Objectives: Strain free ICO² PLAN infinity optics 5x/0.12, 10x/0.25, 20x/0.40, 50x/0.75, 100x/0.80, 40x/0.65, 100x/1.25

OPTIONS for MAGNOLIA and DIAMOND

Attachable cross moving slide holder, neutral density filter ND6 or ND25 Ø 45mm, neutral density filter ND6 or ND25 Ø 25mm, object micrometer 0.01mm, documentation systems**, aluminium case

bee/horner



BEE MS1107

For education and hobby

OPTICS

Magnification: in nosepiece 1x/3x, total 10x/30x; **Optical System:** Greenough system;
Eyepieces: WF 10x/23 (Ø 30mm)

MECHANICS

Working Distance: Standard 95 mm; **Base:** with frosted glass plate, black/white plate and stage clips; **Head:** Binocular 45° inclined, 360° rotatable; **Illumination:** Incident light 9V2W LED, transmitted light 12V3W LED, can be used simultaneously



HORNET MZ1280

Discover a world beyond the reach of normal vision

OPTICS

Magnification: zoom tube from 0.6x - 5x, zoom ratio 1 : 8.3, total 6x - 50x; **Optical System:** Infinity optical light path; **Eyepieces:** WF 10x/22 (Ø 30mm)

MECHANICS

Working Distance: Standard 95 mm; **Base:** with clear glass plate and stage clips; **Head:** Binocular 45° inclined, 360° rotatable; **Illumination:** Incident light 12V3W LED, transmitted light 12V4W LED can be used simultaneously

OPTIONS

Photo tube, documentation systems**, auxiliary lenses, eyepieces, universal stands, extended arm stands, polarization, aluminium case

spider/viper/FL



SPIDER MZ2000 / VIPER MZ3000

Getting the most information possible from your specimen

OPTICS

Optical System: 1x Plan auxiliary lens $n.A. 0.09$; **Eyepieces:** WF 10x/22(\varnothing 30mm)

Magnification Spider: Zoom Ratio 1:8; Zoom Range 0.8x-6.4x;
Standard Magnification 8x-64x; Total Magnification Range 4x-256x

Magnification Viper: Zoom Ratio 1:10; Zoom Range 0.8x-8x;
Standard Magnification 8x-80x; Total Magnification Range 4x-320x

MECHANICS

Working Distance: Standard 78 mm, coaxial coarse & fine focusing system; **Base:** Pole stand, dimensions 285 x 350 x 370mm; **Head:** Binocular, inclined 20°, rotatable 360°;

Illumination: Incident and transmitted LED light for 100-240V, can be used simultaneously. Incident light 3W LED, transmitted light 6W LED

FLUORESCENCE ATTACHMENT

for stereo microscopes MZ-series

OPTIONS MZ series

ERGO head, auxiliary lenses 0.3x/ $n.A.0.03$; 0.5x/ $n.A.0.05$ and 2.0x/ $n.A.0.20$, eyepieces WF15x and WF20x, iris diaphragm, polarization, and darkfield attachment, universal stands, extended arm stands, double port/single port splitter, documentation systems**, fluorescence attachment

FLUORESCENCE ATTACHMENT

Light filter system green (GFB-B)

- Excitation 460-500
- Dichroic mirror DM505
- Cut-off filter BA510-560

Light filter system green/red (GFB-L)

- Excitation 460-500
- Dichroic mirror DM505
- Cut-off filter BA510

MICROS DOCUMENTATION SYSTEMS

We offer for almost every microscope documentation systems to analyze and/or store your observation results.

CANON Photo Cameras

Digital compact camera



Digital SLR camera



MICROS Live Cameras



- CAM 130 "CLASSIC"
- CAM 320 "ADVANCED"
- CAM 500 "PREMIUM"

MICROVISIBLE

Video Camera

Cam 5000

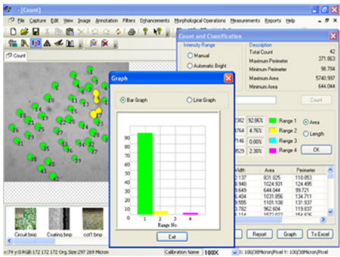


High Definition camera

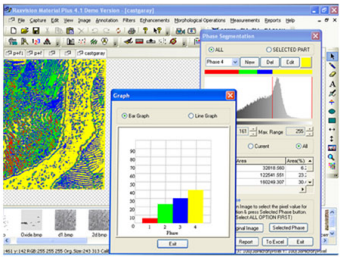


IMAGE ANALYZING SOFTWARE

Biowizard Software for Life Science applications
for editing, analyzing and measuring images



Material Plus Software for Material Science applications
for editing, analyzing and measuring images



MICROS SPECIAL FEATURE

Patented unique flexible glass stage and glass flash stage

With customary tables after many working hours you have the problem of scratched, blotchy surfaces. From now on this sad fact can be changed easily. We provide a stage with an exchangeable, ultra-hardened, flexible glass plate which is resistant against abrasion, scratches and chemical fluids. In addition, the frosted screen makes the specimen visible and gives you the possibility to preselect your samples. An extra-safety glass and finish-machined edges guarantee save and aesthetic work.

Lily MCX500 combines the glass stage with a high-tech light system. The integrated light foil grants a homogeneous illumination and allows to make a fast macroscopical preselecting of the specimen. The foil's white surface creates an inspection area which makes it easy to decide about and/or examine bad-dyed specimens or to mark very small samples. The gentle light is on/off-switchable and even after some working hours does not get warm. The surface is easy to clean and in case it should be necessary the glass plate is exchanged in just a few easy steps.

Lotus MCX51



Daffodil MCX100



Orchid MCX300



Lily MCX500



Sliding stage

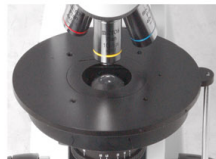
A special type of a specimen stage. It features a round plate instead of the rectangular plate. The greasy film under the plate makes movement very smoothly which makes the positioning of objects absolutely free and extremely fast.

- Fast and easy positioning of the slides
- Quick positioning of the slide – no need of specimen holder
- Smooth work possible up to 1000x magnification
- Quick change between right and left hand use

Lotus MCX51



Daffodil MCX100



Temperature controlled stage

A temperature controlled stage is needed when a constant temperature has to be provided to observe special specimen like for example living cells. It can be easily applied to the MICROS microscope stages of Pink MC50, Lotus MCX51 and Daffodil MCX100.

Lotus MCX51



Daffodil MCX100



MULTI - OBSERVATION - UNITS

Observation set for 2 people FACE to FACE / SIDE by SIDE

1 operator and 1 observer

Set consisting of:

- 1 binocular tube
- 2 eyepieces
- 1 observation bridge with green LED pointer, brightness adjustable, moveable by joystick

Observation set for 3 people LEFT SIDED or RIGHT SIDED

1 operator and 2 observer

Set consisting of:

- 2 binocular tubes
- 4 eyepieces
- 1 observation bridge with green LED pointer, brightness adjustable, moveable by joystick

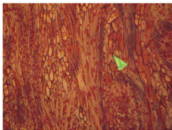
Observation set "Multiviewing" for 5 people 1 operator and 4 observer

1 operator and 4 observer

Set consisting of:

- 4 binocular tubes
- 8 eyepieces
- 1 observation bridge extending left and right with green LED pointer, brightness adjustable, moveable by joystick

LED pointer



Lily MCX500 observation set for 5 people



Available observation units by model

	for 2 people	for 3 people	for 5 people
Daffodil MCX100	●		
Orchid MCX300	●	●	
Lily MCX500	●	●	●
Sundew MCXI600	●		

Daffodil MCX100 observation set for 2 people



Orchid MCX300 observation set for 3 people



Lily MCX500 observation set for 3 people



