

# **LABORATORY PADDING MANGLE**

## **Horizontal Type**

### **OPERATION MANUAL**

**COPOWER TECHNOLOGY CO., LTD.**

TEL : 886-2-26945880 FAX : 886-2-26935793 Website : <http://www.copower.com.tw>

NO. 341, FU DE 1<sup>ST</sup> ROAD, HIS CHIH DISTRICT, NEW TAIPEI CITY, TAIWAN

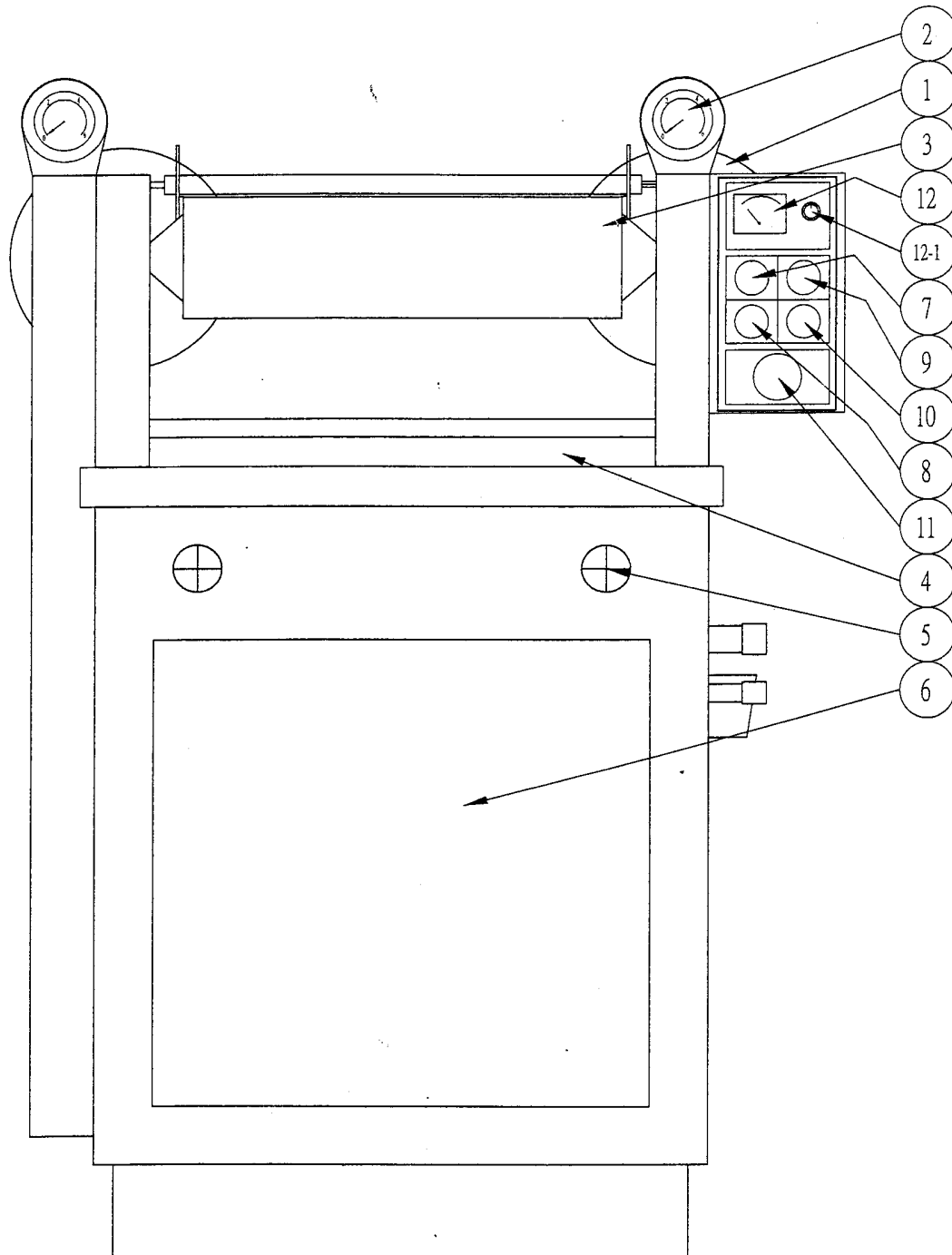
## LABORATORY PADDING MANGLE

## P-BO / P-BI

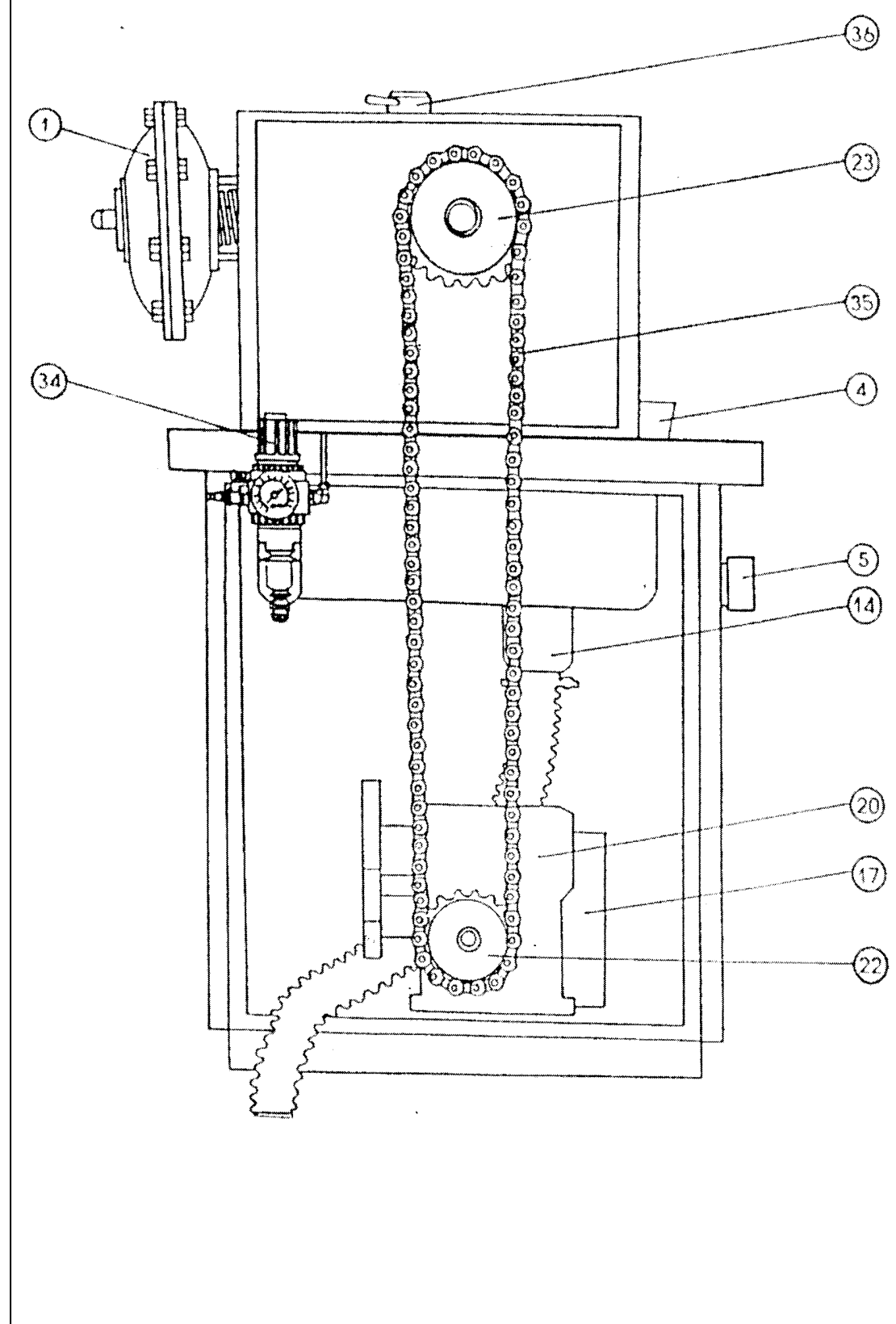
# OPERATION MANUAL

<u>SEQ</u>		<u>PAGE</u>
FRONT VIEW 【FIG-1】	-----	2
LATERAL VIEW 【FIG-2】	-----	3
FRONT SECTIONAL VIEW 【FIG-3】	-----	4
LATERAL SECTIONAL VIEW 【FIG-4】	-----	5
CHEMICAL HOLDER 【FIG-5】	-----	6
ELEMENT DESCRIPTION	-----	7
INSTALLATION	-----	8
OPERATION	-----	9
START APPLICATION	-----	10
ADJUSTMENT OF PICK-UP RATE	-----	11
MAINTENANCE	-----	11
ELECTRICAL DIAGRAM	-----	12

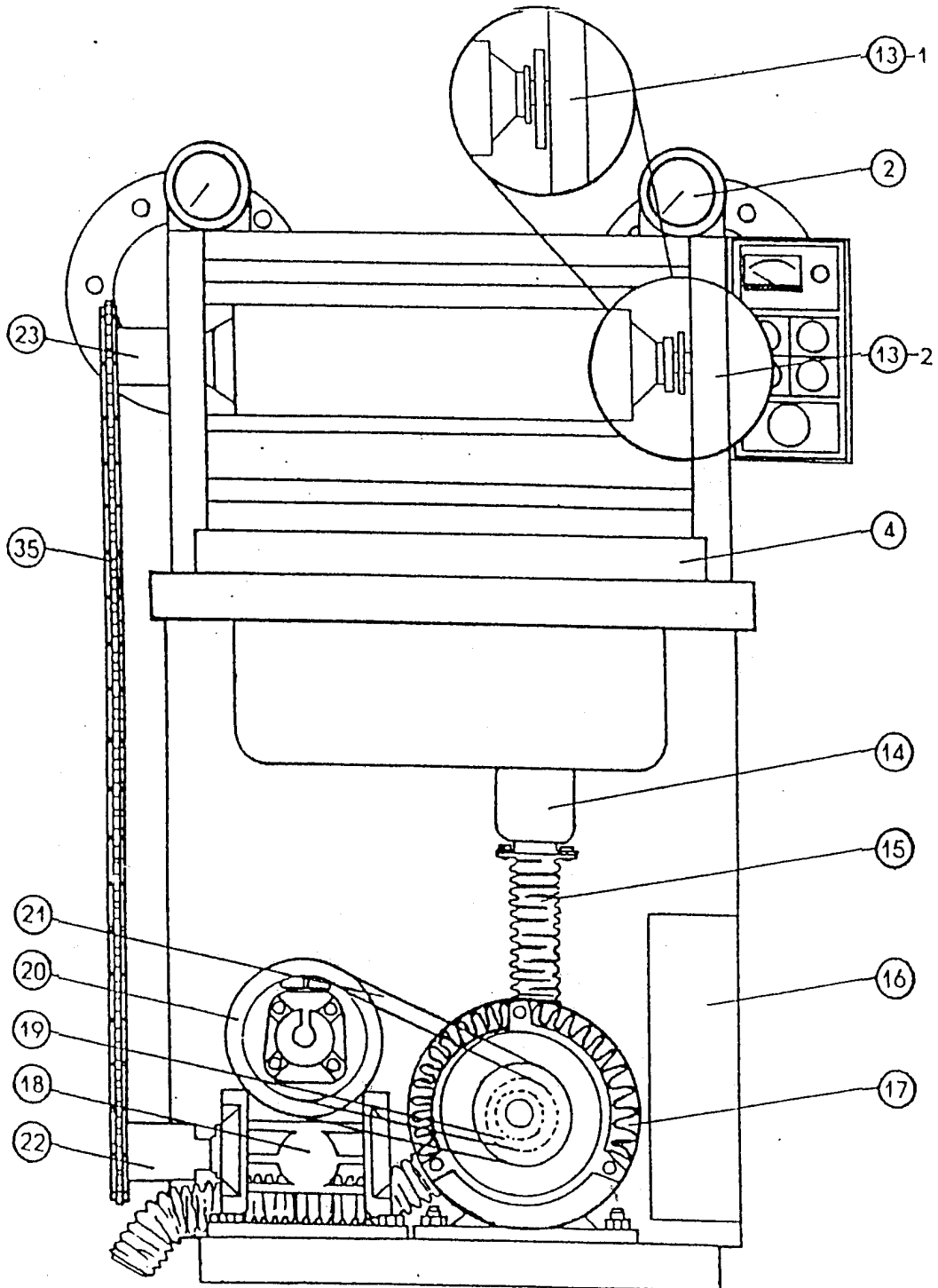
FRONT VIEW 【FIG-1】



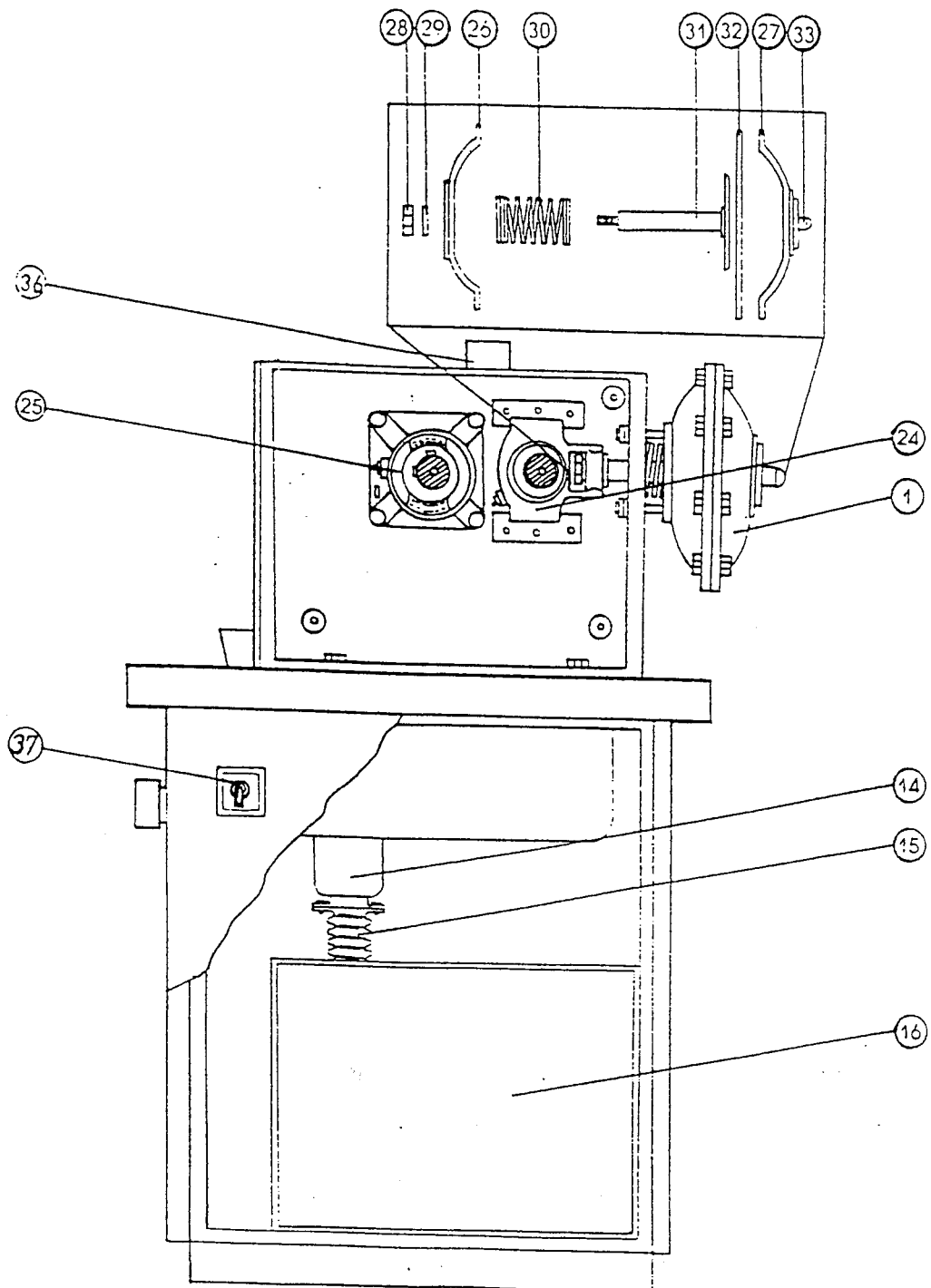
LATERAL VIEW 【FIG-2】



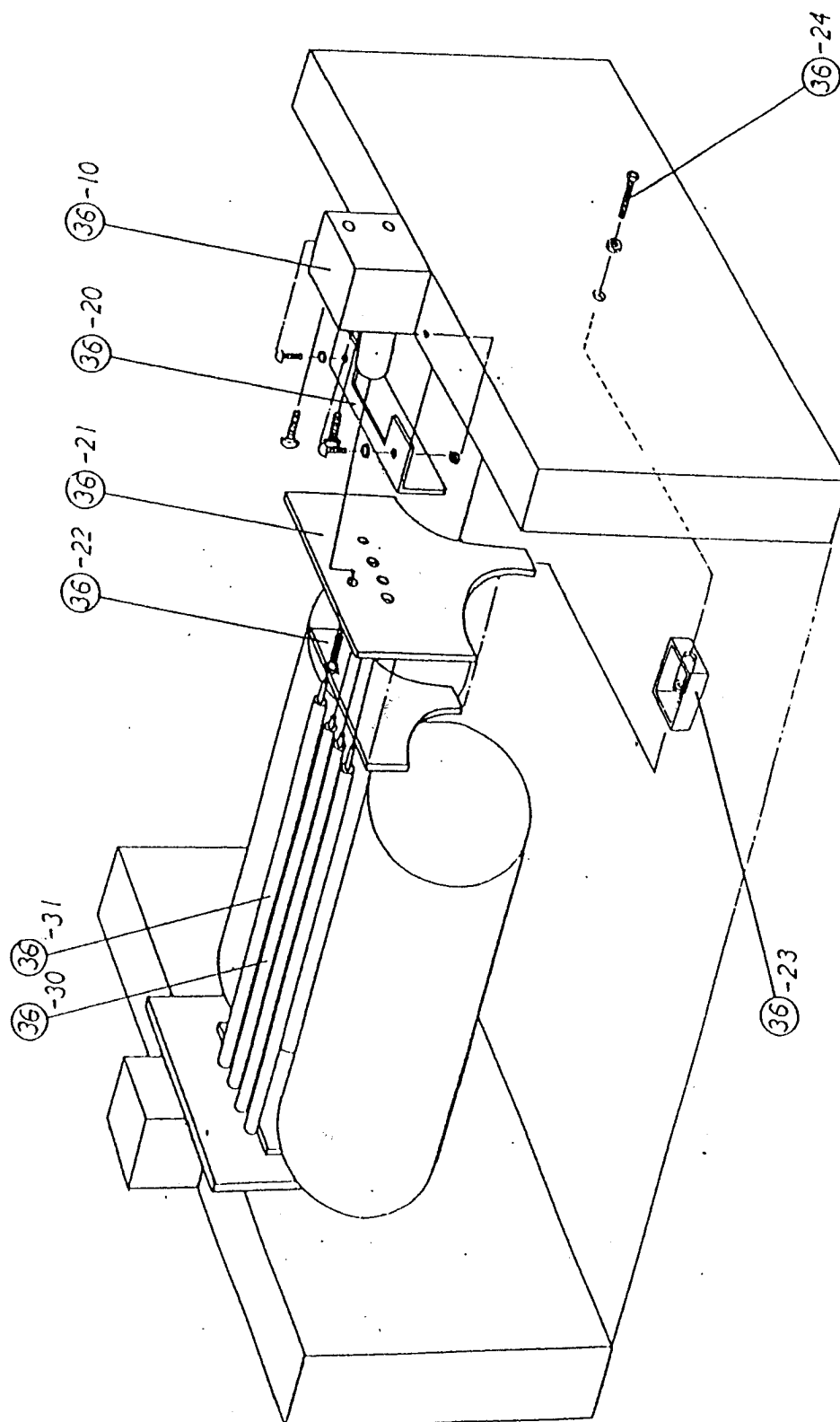
FRONT SECTIONAL VIEW 【FIG-3】



LATERAL SECTIONAL VIEW 【FIG-4】



CHEMICAL HOLDER 【FIG-5】



## ELEMENT DESCRIPTION

ITEM	DESCRIPTION	REMARK
1	Diaphragm Complete	膜閥
2	Pressure Gauge	壓力表
3	Roller	橡膠滾輪
4	Fluid Bed	藥槽
5	Air-Regulator	壓力調整閥
6	Emergency Touch	緊急觸摸開關
7	Pad ON Button	加壓按鈕
8	Pad OFF Button	洩壓按鈕
9	Motor ON Button	馬達啟動按鈕
10	Motor OFF Button	馬達停止按鈕
11	Emergency OFF	緊急停止開關
12	Panel Meter	轉速表
12-1	Panel Meter Adjuster (Speed Control)	調速旋鈕
13-1	Teflon Water Bar	鐵弗龍擋板
13-2	Teflon Ring	鐵弗龍墊圈
14	Sink Strainer	過濾槽
15	Ducting Hose	排水浪管
16	Enclosure	電氣箱
17	Motor (1/4HP)	馬達
18	Pully	皮帶輪
19	Speed Reducer	減速機
20	Pully	皮帶輪
21	Belt	皮帶
22	Sprocket	齒輪
23	Sprocket	齒輪
24	Bearing	培林
25	Bearing	培林
26-33	Diaphragm Valve Parts	膜閥零件
34	Air Filter & Regulator	空氣濾清器及調壓閥
35	Chain	鏈條
36	Chemical Holder	藥槽



## INSTALLATION

1. Check the machine to see if there is any damage of transport.  
  
If there is any damage, please inform us the details by Tel:886-2-26945880  
by FAX:886-2-26935793
2. Please check packing list to make sure if it is complete, otherwise please inform our company.
3. Place machine at desired position and keep proper space for machine maintenance.
4. Please connect water outlet pipe to proper drainage channel.
5. Make sure the power supplied by factory meets the power data written on control panel of machine of it is ok then please connect the power wire to non-fuse breaker.
6. Connect the air outlet pipe of air compressor with the inlet of air.

## OPERATION

1. **Check supplied air pressure is adequate** at least  $1\text{ kg/cm}^2$  higher than the needed one max need  $6\text{ kg/cm}^2$
2. **Make sure the Roller Rotating direction** is from the back toward the front.  
  
The tested sample fabric is supposed to come out toward the operator.  
  
Put the wetted (impregnated) sample on the surface of the top roller then start the padder the sample will be guided and squeezed by the mangles and come out toward the operator. This is correct and safe way.
3. **Regulating the pick-up rate**
  - A. Individually regulate the pressure gauges left or right.
  - B. Pressure regulator turn clockwise for more pressure anti-clockwise for less pressure.
  - C. 1). Press button of Pad ON **【FIG1-4】** then regulate it by turning clockwise to reach desired pressure.  
  
2). Press Pad OFF button **【FIG1-5】** to release pressure.  
  
3). Repeat 1<sup>st</sup> and 2<sup>nd</sup> steps 2-3 times to make sure to reach the desired pressure.
  - D. After repeating and confirm the both side of Roller pressure could reach required pressures then slightly pull the regulators to “lock” position.
  - E. Conduct the padding with sample fabric to measure the pick-up, adjust the pressure to reach the desired pick-up rate.
4. **Prepare the resin or chemical solution for the application**

## START APPLICATION

1. Clean rollers and dry them.
2. Press Motor ON button 【FIG1-6】 and Pad ON button 【FIG1-4】 .
3. Wetting (impregnating) tested fabrics.
4. Padding the tested fabric.
5. Forward the padded fabric to next step like drying 、 curing.
6. Clean rollers for another recipe.
7. When work finished press Pad OFF button 【FIG1-5】 and Motor OFF button 【FIG1-7】 .

## REMARK:

**Each time you change the setting of pressure, please repeat pad on → pressure regulating → pad off a couple of times to assure the pressure gauge is reacting properly.**

## ADJUSTMENT OF PICK-UP RATE

Under the same condition of pressure, different fabrics will gain different pick-up the best way is gradually testing from 0.8/1/2/3/4/5 kg/cm<sup>2</sup> to get each pick-up value at different pressures and draw a pick-up curve for obtaining a better result on individual fabric.

## MAINTENANCE

1. Clean Rollers with clean water at end of test.
2. Replace lubricant of gear reducer every 1000 hour working time.
3. Regulate the tension of connecting chain and lubricate it at every 1000 hour.
4. Bearing to be greased every 4-6 months.

# ELECTRICAL DIAGRAM

